

NOBLE HARDWARE

PRECAST

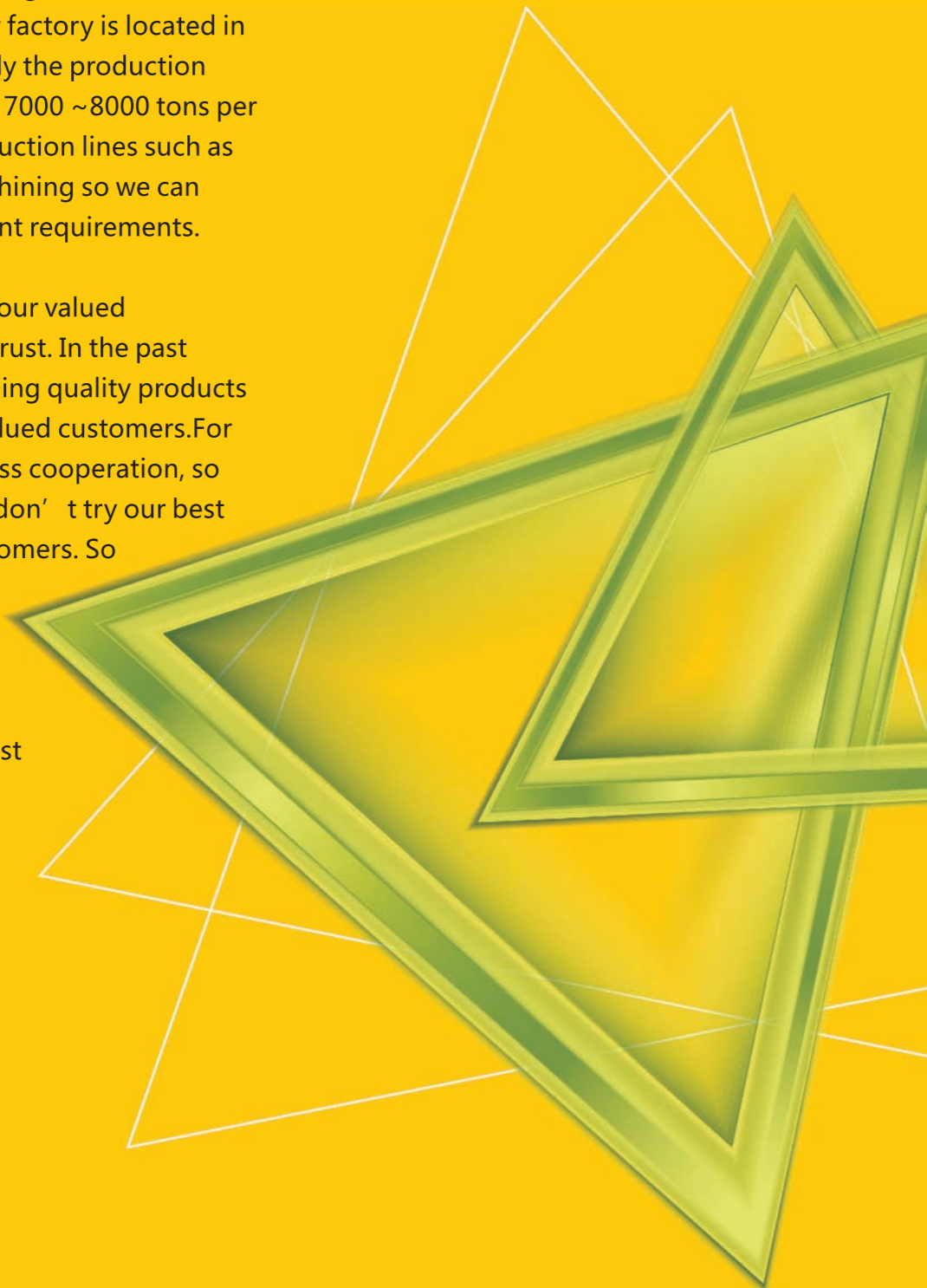


NINGBO NOBLE HARDWARE CO.,LTD.



With more than 10 years experience in providing Precast Concrete Accessories and Fasteners , Ningbo Noble hardware has grown as a professional company. Our factory is located in Beilun,Ningbo and normally the production capacity can be reached to 7000 ~8000 tons per year. We have several production lines such as forging,stamping and machining so we can satisfy customer' s different requirements.

We are always grateful for our valued customers' support and trust. In the past years,we devoted in providing quality products and good service to our valued customers.For us,we cherish every business cooperation, so there is no reason that we don' t try our best to support our valued customers. So if you need quality products,good service and reliable partner, here we are! Ningbo Noble hardware is always your best choice.

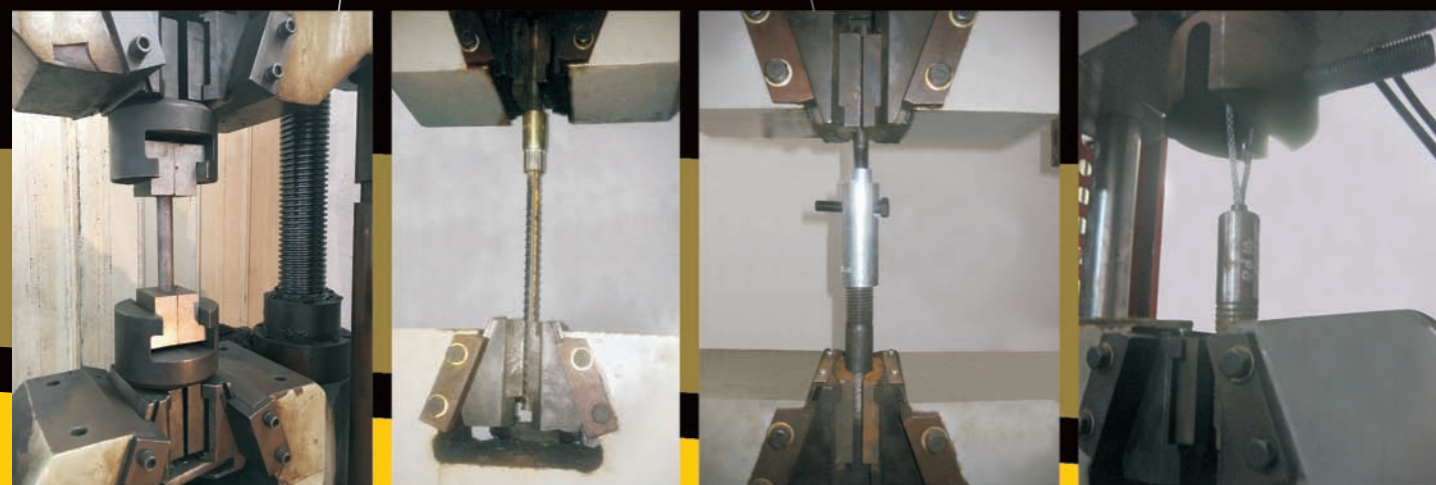
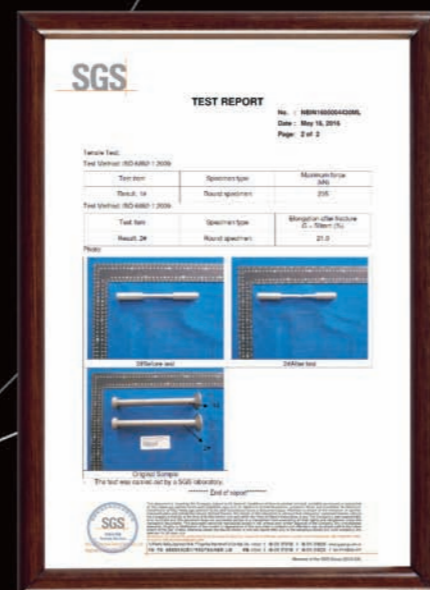


- 01 Quality Control
- 02 Lifting Anchor System
- 04 Rebar Anchor System
- 05 Lifting & Fixing Socket System
- 07 Erection Anchor System
- 09 Cast In Channel & Accessories
- 11 Coil Insert System
- 13 Lifting Clutch & Loop
- 15 Rubber & Steel Recess Former

Contents

QUALITY CONTROL

NOBLE
hardware



QUALITY INSPECTION



LIFTING ANCHOR SYSTEM



NBP-101
Spherical Head Anchor



NBP-102
Lifting Eye Anchor



NBP-201
Straight End Anchor



NBP-202
Long Waved End Anchor



NBP-203
Short Waved End Anchor



NBP-103
Foot Eye Anchor



NBP-104
Lifting Ring Anchor



NBP-105
Double Head Anchor



NBP-106
Spherical Head Anchor
With Plate



NBP-204
Waved Tail Anchor



NBP-205
Double Foot Rebar Anchor



NBP-206
Single Foot Rebar Anchor



NBP-107
Offset Spherical Head Anchor



NBP-108
Single Head Anchor



NBP-109
Utility Anchor



NBP-207
Single Lifting Rebar Anchor

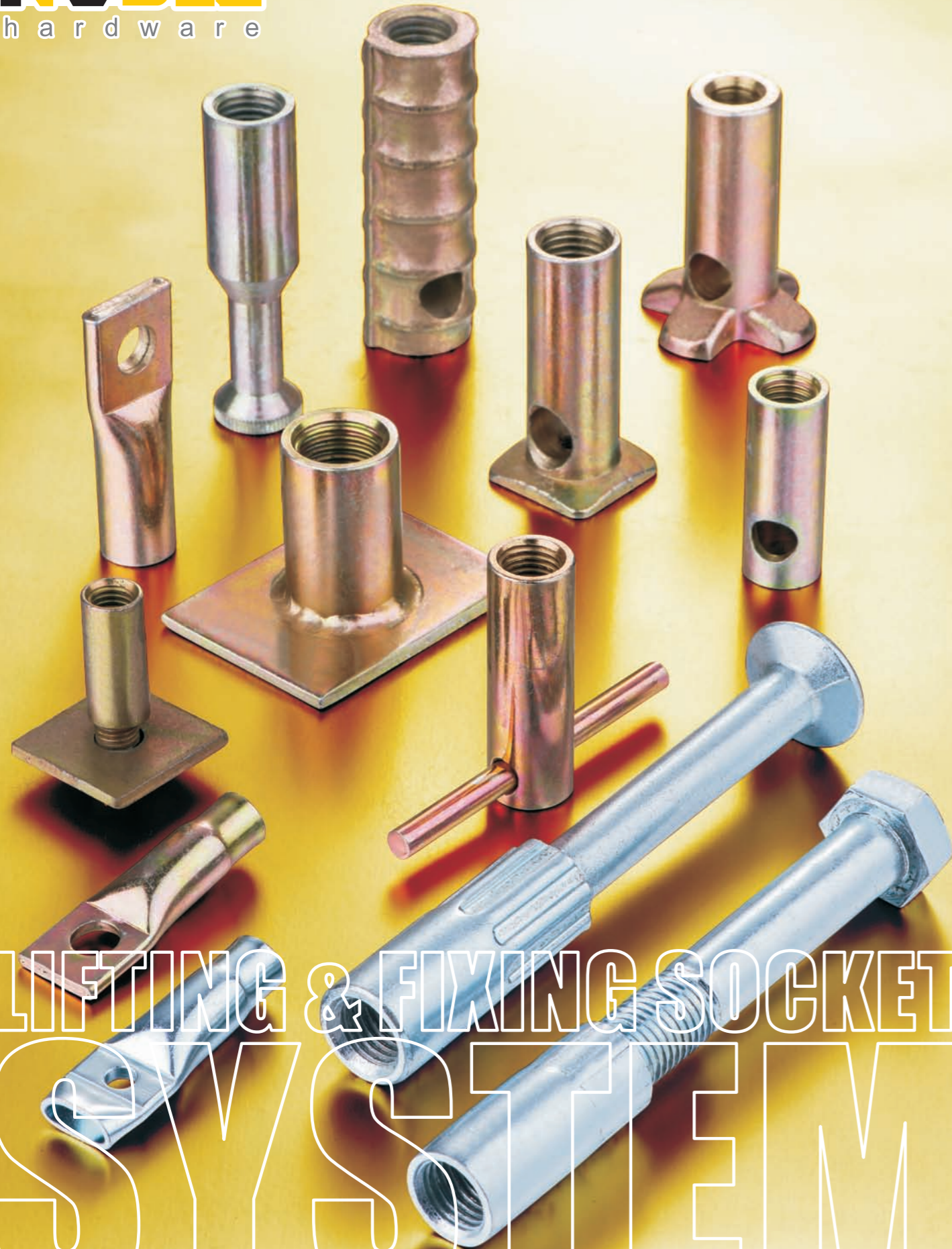


NBP-208
Bent Lifting Rebar Anchor



NBP-209
L Rebar Anchor

LIFTING & FIXING SOCKET SYSTEM



- | | | | | | | | |
|---|---|---|---|---|---|---|---|
|  |  |  |  |  |  | | |
| NBP-301
Fixing Insert | NBP-302
Flat Fixing Socket | NBP-303
Fixing Socket Wavy End | NBP-304
Fixing Socket With Bended End | NBP-305
Fixing Socket With Crimped End | NBP-306
Fixing Socket Wavy End With Plate | | |
|  |  |  |  |  | | | |
| NBP-307
Fixing Socket With Cross Pin | NBP-308
Solid Rod Fixing Socket With Cross Pin | NBP-309
Fixing Insert With Plate | NBP-310
Lifting Insert With Plastic Plug | NBP-311
Tubular Lifting Socket | | | |
|  |  |  |  |  |  | | |
| NBP-312
Round Fixing Socket | NBP-313
Lifting Socket With Plate | NBP-314
Hex Elephant Foot Anchor | NBP-315
Round Foot Anchor With Hole | NBP-316
Bolt Anchor With Plate | NBP-317
Square Elephant Foot Anchor | | |
|  |  |  |  |  |  |  |  |
| NBP-318
Square Foot Anchor | NBP-319
Cross Foot Anchor | NBP-320
Round Foot Anchor | NBP-321
Crown Foot Socket | NBP-322
Lifting Bolt Anchor | NBP-323
Foot Anchor Socket | NBP-324
Rebar Lifting Socket | NBP-325
Hex Long Nut |



ERECTION ANCHOR SYSTEM

Erection Anchor System



NBP-401
Erection Anchor



NBP-402
Spread Anchor



NBP-403
Flat Foot Anchor



NBP-404
Two Hole Anchor



NBP-405
Single Sided
Erection Anchor



NBP-406
Universal Anchor



NBP-407
Erection Anchor
With Shear Plate



NBP-408
Erection Anchor
With Pin



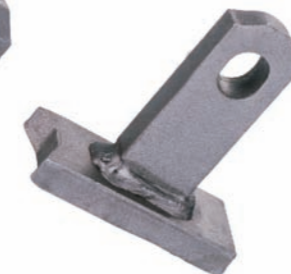
NBP-409
Fleet Lift Anchor



NBP-410
Erection Anchor
With Shear Plate



NBP-411
One Hole Erection
Anchor With Pin



NBP-412
Flat Plate Anchor



NBP-413
H Anchor

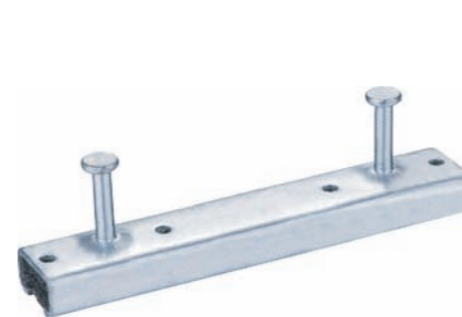


NBP-414
Erection Anchor
With Plastic Cap

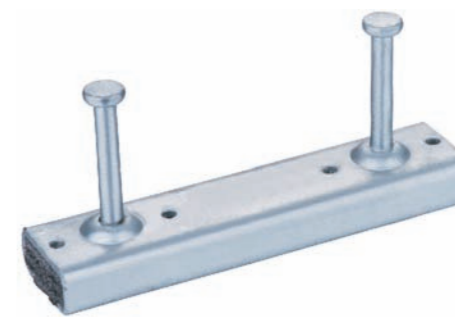


CAST IN CHANNEL AND ACCESSORIES

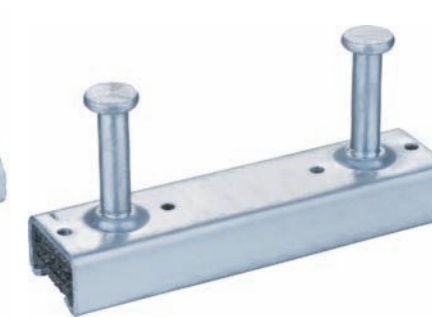
Cast In Channel & Accessories



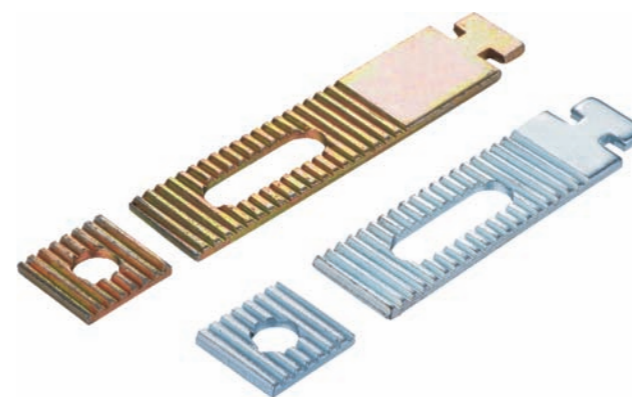
NBP-501
28/15 Channel



NBP-502
38/17 Channel



NBP-503
40/25 Channel



NBP-504
Hammer Hook-Head Toothed Strap



NBP-505
T-Bolt With T-Nut



NBP-506
Hammer Head Bolt



COIL INSERT
SYSTEM

Coil Insert System



NBP-601
Two Struts Coil Insert



NBP-602
Four Struts Coil Insert



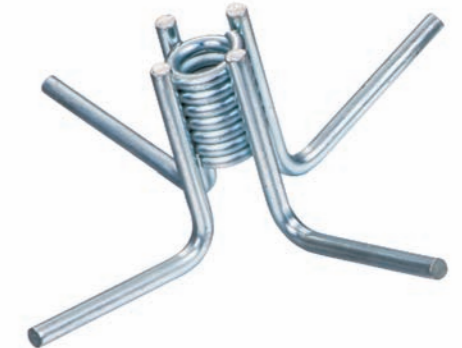
NBP-603
Ferrule Loop Insert



NBP-604
Single Flared Coil Loop Insert



NBP-605
Open Coil Insert



NBP-606
Four Leggs Coil Insert



NBP-607
Criss Cross Straight Loop Coil Insert



NBP-608
Thin Slab Ferrule Insert



NBP-609
Ferrule Wing Insert



LIFTING CLUTCH
AND LOOP

Lifting Clutch & Loop



NBP-701
Lifting Clutch



NBP-702
Lifting Ring Clutch



NBP-703
Lifting Swivel Loop



NBP-704
Wire Rope Ring Clutch



NBP-705
Wire Rope Bolt Clutch



NBP-706
Lifting Loop



NBP-707
Cast In Loop



NBP-708
Loop Box



NBP-709
Bent Loop

Rubber & Steel Recess Former



NBP-801
Rubber Recess Former With Bolt



NBP-802
Narrow Rubber Recess Former With Bolt



NBP-803
Ring Lift Recess Former



NBP-804
Rubber Ring Seal



NBP-805
Plastic Nailing Plate



NBP-806
Double Head Anchor Rubber Former



NBP-807
Double Head Anchor Rubber Former With Magnet



NBP-808
Steel Nailing Plate With Magnet



NBP-809
Steel Recess Former



NBP-810
Steel Recess Former With Magnet Type 1



NBP-811
Steel Recess Former With Magnet Type 2



NBP-812
Shuttering Magnet



NBP-813
Mounting Plate

NOBLE
hardware

HAPPY IN BUSINESS IS OUR BUSINESS

www.nbnobleconstruction.com

NINGBO NOBLE HARDWARE CO.,LTD.

Add:Room #2211,22/F of Yinzhou Chamber of Commerce, No.1299 Yinxian Avenue,Yinzhou District,Ningbo City,China

Tel:+86-574-83089176 **Fax:**+86-574-83089175 **E-mail:**sales@nbnoblehardware.com

www.nbnobleconstruction.com